

Stainless steel fittings, machined and welded threads for immersion heaters

Minimum Size	Maximum Size	Material	Type	Model
1½"	M77 × 2	AISI 304 AISI 316	Plain fitting for enclosure	66YU

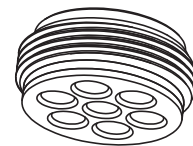
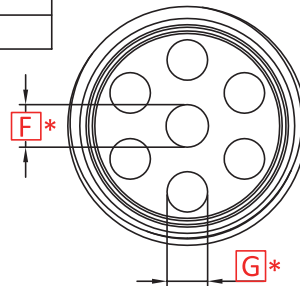
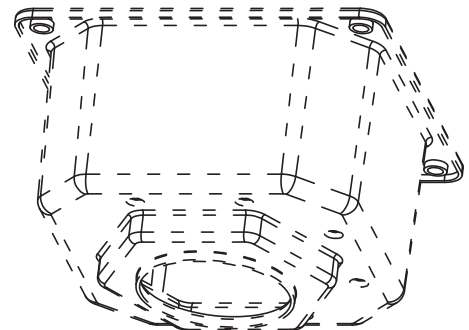
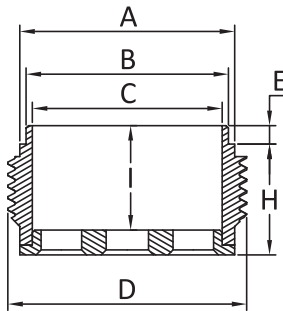
Compatible with:

Y3S6 Y3SB
 Y3S8 Y3SC
 Y3S9

Designed for direct welding on enclosures or deep drawn fittings with soldering lip.




	1-1/2"	M45x2	2-1/2"	M77x2
A	Ø43	Ø43	Ø72	Ø72
B	Ø40.5	Ø40.5	Ø69.5	Ø69.5
C	Ø38	Ø38	Ø66.5	Ø66.5
D	1-1/2"	M45x2	2-1/2"	M77x2
E	3.7	3.7	3.7	3.7
F	Ø8.6(x0,x1) Ø10(x0,x1)	Ø8.6(x0,x1) Ø10(x0,x1)	Ø8.6(x0,x1,x2) Ø10(x0,x1,x2) Ø12(x0,x1,x2)	Ø8.6(x0,x1,x2) Ø10(x0,x1,x2) Ø12(x0,x1,x2)
G	Ø6(x2,x4,x6) Ø8(x2,x4,x6)	Ø6(x2,x4,x6) Ø8(x2,x4,x6)	Ø8(x2,x4,x6) Ø10(x2,x4,x6) Ø12(x2,x4,x6)	Ø8(x2,x4,x6) Ø10(x2,x4,x6) Ø12(x2,x4,x6)
H	22	22	22	22
I	21	21	21	21





Main references

Dimensions	References in 304	References in 316
1-1/2"	66YUC112I22*****	66YUC112T22*****
M45x2	66YUM452I22*****	66YUM452T22*****
2-1/2"	66YUC212I22*****	66YUC212T22*****
M77x2	66YUM772I22*****	66YUM772T22*****

Links


[Page \(.pdf\)](#)


[Drawing 2D \(.dwg\)](#)


[Drawing 3D \(.stp\)](#)

Because of permanent improvement of our products, drawings, descriptions, features used on these data sheets are for guidance only and can be modified without prior advice

Specify dimensions and quantity of holes F and G.

Red dimensions inside rectangular frames on drawings are used for assembly on enclosures or on fittings.

